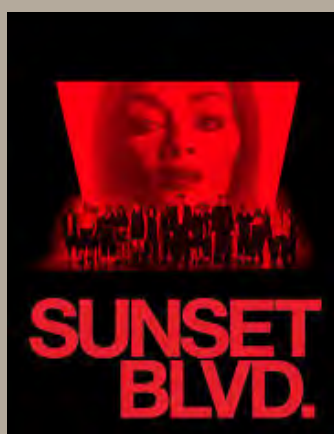




## NYC BRANCH NEWSLETTER

# THE ENGLISH-SPEAKING UNION



[Renew your membership or Join the ESU](#)

for more information contact [DeAndre Short](#)

## MEMBERSHIP

Come join us on **Saturday, February 22nd** for brunch before seeing ***Sunset Boulevard*** at 11:30AM at ESU Headquarters.

Receive a **FREE REAR MEZZANINE TICKET** to the show if you become a member of the NYC Branch before the show.

### [REGISTER HERE](#)

Hotel accommodations are available at the Shelburne-Sonesta Hotel at a special rate for ESU members. Use this link for reservations [English Speaking Union – Shelburne Sonesta New York](#)

Cheers to 2025!

A heartfelt thank you to everyone who joined us for our first Theater Party to see Gypsy! We are grateful for your support.

## THE ENGLISH-SPEAKING UNION

Don't forget to save the date for our upcoming events! We have a variety of enjoyable and thrilling activities coming up that you definitely won't want to miss.

The English-Speaking Union (ESU) is dedicated to celebrating English as a universal language that promotes global unity and friendship. We strive to offer enriching educational and cultural experiences for students, educators, and members alike. Join us in spreading the joy of language and learning!



# REGISTRATION IS OPEN!

## Join us for the 2025 Founder's Award



**We'll be thrilled to have you join us for this year's Gala Weekend!**

**The Founder's Award Gala  
Honoring Dr. E. Quinn Peeper  
Winter Park, Florida  
March 14-15, 2025**



With Special Guest Caroline Emma Stanley, Countess Derby of Knowsley Hall Quinn has fostered ties between Britain and America and cultivated international understanding and friendship; he is the first Founder's Award Winner to have done this through his success as a local Board Member, Branch President, National Board Member, President and National Chair.

**Come join us in honoring your own!**

### **Friday, March 14, 2025**

VIP Cocktail Reception (by invitation only)  
5:00 - 7:00 PM, The Alford Inn, 300 East New England Avenue, Winter Park, FL 32789.  
Transportation will be provided.  
Festive attire.

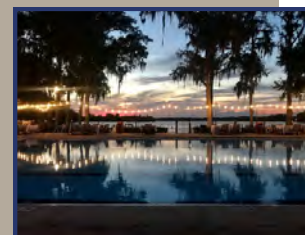


### **Saturday, March 15, 2025**

National Board of Directors Board Meeting  
10:00 AM-12:00 PM, the Alford Inn, continental breakfast will be served  
Activities (transportation provided)  
Boat Tour, Museum, Golf (to be scheduled on your own)

### **ESU Founder's Award Gala**

6:00 - 7:00 PM: Cocktails and hors d'oeuvres  
7:00 - 9:00 PM: Dinner  
Winter Park Racquet Club, 2111 Via Tuscany, Winter Park, FL 32789  
Transportation will be provided.  
Black tie.



Tickets available for the entire weekend or just the Gala event!

**Learn More and Register Online**

For more information: Rossana Ivanova (862) 224-4244, [rivanova@esuus.org](mailto:rivanova@esuus.org).



The ESU Players performed a staged reading of Ken Ludwig's *The Game's Afoot or Holmes for the Holidays*

All performances are held at  
144 East 39th Street, NYC

## THE ESU PLAYERS

**SAVE THE DATE!**

**Thursday, January 16**

The ESU Players will perform  
Chekhov's *The Three Sisters*.

Join us for a reception starting at  
6:00 PM, followed by the play at  
6:30 PM.

*Admission is free, but request that  
you RSVP by sending an email to  
[louisemuse4@gmail.com](mailto:louisemuse4@gmail.com).*

## ESU HAPPY HOUR

**SAVE THE DATE!**

**January 8, 2025**

**Happy Hour: Churchill's Citadel**

4:00 pm - 5:00 pm EST

Sponsored by ESU Charlottesville Branch

Katherine Carter, the curator of Churchill's country home, will discuss how Chartwell became the center of Churchill's anti-Nazi activities in the 1930s. Despite being politically sidelined, Churchill used his home to strategize against Nazi Germany with the help of influential allies like Albert Einstein and T.E. Lawrence.



[Click here to hear some of our  
EiA Volunteer Stories](#)

for more information contact [Matt Hudson](#)

## VOLUNTEER WITH ENGLISH IN ACTION!

**Happy New Year!** At the start of this new year, help our new immigrant students improve their English language skills. *Online volunteers are needed.* No experience is necessary and training is provided. It only takes two hours a week to support someone who needs it! Sign up for an information session today to get started.



## ESU LUARD MORSE SCHOLAR CROSSES THE POND!

Bon Voyage to Kennedy Williams, as she starts the New Year with a Semester Abroad at Queen Mary, University of London! A junior at North Carolina A&T State University, Kennedy intends to continue her study of Biology in pursuit of her long-term career goal of becoming a forensic medical examiner. We wish her the very best in her academic & cultural experiences in the UK.



Kennedy Williams (center) with ESU Luard Morse Scholarship Finalists & Committee Members

**For more information, go to:**

**<https://www.esuus.org/luard-morse-scholarship-college-juniors/>**



2024 TSTP on Stage at the Globe

**For applications and more information:**

**<https://www.esuus.org/newyork/tlab-3/>**

## INTERNATIONAL PUBLIC SPEAKING COMPETITION (IPSC)

Open the World to your high school students through Public Speaking! The IPSC brings together the best young speakers aged 16 - 20 worldwide for a week of public speaking competition, training & cultural exchange at the ESU in London May 12 - 17, 2025. The ESU US delegate will receive an all-expense paid trip.



**For applications and more information, go to:**

**<https://www.esuus.org/what-we-do/international-public-speaking-competition/>**

*for more information contact [Alice Uhl](#)*



for more information contact [Karl Hart](#)

[Read more about the program at esu-arnic.org.](#)

## THE ESU ANDREW ROMAY NEW IMMIGRANT CENTER (ARNIC)

The ESU Andrew Romay New Immigrant Center (ARNIC) is a free program that facilitates the integration of immigrants, asylum seekers and refugees into U.S. life. We provide immigrants with the tools and resources to overcome barriers and build successful lives in the U.S. Our center offers English classes, conversation practice and career services. Learn more about the center [here](#).

January will be a busy time at our center for new immigrants. Over 100 immigrants will join our program for the first time this month. Students will take part in nine intensive English classes. These courses will help students build language skills to find jobs, access resources and thrive in the U.S. Course topics will include Business Communication, Rhetoric & Public Speaking and U.S. Government and Politics.

## ESU NATIONAL SHAKESPEARE COMPETITION

**Join us for the ESU NYC Branch Shakespeare Competition!**

Come see talented high school students compete in two Semi-Final Rounds at the **ESU at 144 E 39th St.**

- Round 1: Mon, Feb 10, 4–7 PM
- Round 2: Wed, Feb 12, 4–7 PM

The top 10 contestants will advance to the Finals at **The Players at 16 Gramercy Park South**, a stunning venue steeped in theater history.

- NYC Finals: Tues, Feb 25, 4–6 PM

Hope to see you there!



for more information contact [Maryellen Liotta](#).





Set sail on an extraordinary journey through history aboard the magnificent Sea Cloud Spirit, retracing the footsteps of one of Britain's greatest naval heroes, Admiral Horatio Nelson. This exclusive voyage, co-hosted by the English-Speaking Union and Sea Cloud Cruises, offers a unique blend of luxury, adventure, and intellectual stimulation.

#### Highlights:

- Sail from Naples to Malta on board Sea Cloud Spirit, ranked among the best luxury passenger ships in the world. This three-mast windjammer's 28 sails are hoisted by hand for authentic sailing experience
- Exclusive lectures by renowned biographer Flora Fraser
- Visit key locations in Nelson's Mediterranean campaigns
- Experience the thrill of sailing on a tall ship in Nelson's wake
- Indulge in luxurious accommodations and gourmet cuisine

#### **The English-Speaking Union**

promotes cross-cultural understanding, and expands opportunities for students, teachers, English language learners and members through the English language.

## PATRON TOUR 2025

The English-Speaking Union

In Partnership with

Sea Cloud Cruises

Presents

2025 National Patron Tour  
Nelson on Shore and at Sea:  
A Life of the British Admiral  
With Author and Lecturer Flora Fraser

July 6-14, 2025

Naples to Malta

Aboard Sea Cloud Spirit



#### **The ESU National Patron Tours**

enhance our Patrons' engagement with the ESU community through bespoke experiences of cultural enrichment, educational exploration, and unforgettable adventures.

contact Rossana Ivanova for more information at  
[rivanova@esuus.org](mailto:rivanova@esuus.org) or (862) 224-4244