

NYC BRANCH NEWSLETTER

THE ENGLISH-
SPEAKING UNION

MEMBERSHIP

Become a member today and experience the endless benefits! Join or renew at any time to enjoy uninterrupted access to our programs, receive personalized reminders, and start benefiting immediately. Thank you for your support!



[Renew your membership or join the ESU](#)

[for more information contact DeAndre Short](#)

August Office Hours:

August 26 at 3:00-4:00PM EST [Click Here](#)



[Visit our NYC Branch Website](#)

THE ENGLISH-SPEAKING
UNION**Discover, Connect, and Thrive with the English-Speaking Union (ESU)**

At the English-Speaking Union, we believe in the transformative power of the English language to unite people across borders, backgrounds, and generations. Through language, we open doors to understanding, collaboration, and lifelong learning.

Whether you're a student, educator, or globally curious individual, there's a place for you in the ESU community. From thought-provoking workshops and speaker events to elegant receptions and international exchanges, every gathering offers a chance to grow, share, and belong.

Don't miss out—mark your calendar and join us on this exciting journey.

Stay tuned for event announcements, and prepare to explore new ideas, build new friendships, and be part of a mission that celebrates the best of global citizenship through the English language.

Join the ESU—where language connects and community thrives.



ESU NY DEBATE LEAGUE SUMMER INSTITUTES

It's A Wrap!

Congrats to all the middle school students from the greater NYC area who attended the ESU NY Debate League Summer Institutes. This July, ESU National Headquarters was alive with the sound and energy of middle school students developing their debate skills. "We make time for fun," ESU Debate Coach, Evan Streams shared, "but when we work, they all buckle down. The students' focus and dedication was impressive. I think one of our students said it best. We asked them, "What was your least favorite part of camp?" and one answered, "speaking in front of other people." We then asked, "What was your favorite part of camp?" and she said, "Overcoming my biggest fear."

For more information on ESU Middle School Debate, go to:

<https://www.esuus.org/what-we-do/middle-school-debate-public-speaking/>

or
contact [Alice Uhl](#)



We look forward to seeing many of the students utilize their new found skills this autumn when the New York Debate League Tournament Season begins again.

Week 2



Week 3



ESU TLAB 2025 SUMMER ADVENTURES ACROSS THE POND!

This summer US teachers and lifelong learners have been making the most of living and learning in the UK thanks to the ESU Travel and Learn Abroad programs. From the historic halls of Oxford and Edinburgh, to the magic of seeing dynamic performances at Shakespeare's Globe in London and the Royal Shakespeare Company In Stratford-upon-Avon, participants engaged with world-class scholars, educators, and theater professionals.

"I can not say enough how grateful I am and how thrilled I will always be to be a part of the Page-to-Stage group this year. The opportunity was SO much more than I had even anticipated. The speakers, the shows, the company, the room, etc. far exceeded my expectations and I have been talking about it with friends and family for days. I can't wait to incorporate it into my classroom."

-- Will Goldyn, ESU NY Branch TLab Scholar

"It feels amazing to be back in the classroom as a student! I have been enjoying my time inside and outside of the classroom in Edinburgh."

-- Maria Bowers, ESU Naples Branch TLab Scholar

"Participating in the Oxford University English Literature Summer School was one of the most fulfilling and memorable experiences of my academic and professional career. I had the opportunity to engage deeply with English literature alongside a diverse and inspiring group of teachers and scholars from around the world. It not only broadened my scholarly perspective but also strengthened my teaching practice, equipping me with new ideas, resources, and renewed inspiration to share with my students."

-- Kara Peters, ESU Greenwich Branch TLab Scholar

"I am so grateful to the ESU for this opportunity to participate in Teaching Shakespeare Through Performance at the Globe Theatre in London. It has been the experience of a lifetime and I can't wait to share what I have learned with my students!"

-- Rebecca Donovan-Bain, ESU Palm Beach Branch TLab Scholar

Welcome Home to All & may your TLab Experience in the UK continue to inspire and energize you and your students throughout the year!

For more information go to:

<https://www.esuus.org/what-we-do/teachers-learning-abroad/>
or
[contact Alice Uhl](#)





[Click here](#) to learn more and to donate

For more information contact [Maryellen Liotta](#).

The ESU National Shakespeare Competition

2026 Registration Opens Soon!

The ESU invites you to join the 2026 National Shakespeare Competition, launching in August! Now in its 43rd year, this performance-based program helps high school students build confidence and communication skills through the study and performance of Shakespeare's works. Students from all five New York City boroughs, and over 400 schools nationwide, participated last year. Make your school one of them in 2026!

Professional development workshops are available in the US and UK for participating teachers, with exclusive opportunities for ESU educator members, including TLab UK summer scholarships.

ESU HAPPY HOUR

August 20, 2025

Happy Hour: The Battle of Britain

4:00 pm - 5:00 pm EST
Sponsored by ESU Seattle Branch

June, 1940—In the past two months, Nazi Germany has conquered Norway, Denmark, the Netherlands, Belgium, and France. Great Britain stands alone against the formidable German war machine. Now, Germany decides to bring Britain to its knees. In order to do that, Goering's Luftwaffe must win air superiority over the English Channel and Southeast England. The Battle of Britain is about to begin. It is up to the outnumbered British Royal Air Force—"The Few"—to stop the Germans. Please join Seattle's Museum of Flight volunteer Bob Fishman for an in-depth look at a turning point in history.



[Register Here](#)

Next up:

September 10 @ 4:00 pm - 5:00 pm EDT

Happy Hour: J.R.R. Tolkien: Myth & Modernism

THE ESU ANDREW ROMAY NEW IMMIGRANT CENTER (ARNIC)

The Andrew Romay New Immigrant Center (ARNIC) is a free program that facilitates the integration of immigrants, asylum seekers and refugees into U.S. life. We seek to provide immigrants with the tools and resources to overcome barriers and build successful lives in the U.S. Our center offers English classes, conversation practice and career services. The program is grounded in a commitment to diversity, equity and inclusion. Each year we serve 350+ new immigrants. More than 2,000 immigrants from 60+ countries have benefited from our services since the center opened its doors.

To further support the Andrew Romay New Immigrant Center at the ESU, please consider donating at:
<https://www.esuus.org/get-involved/donate/>



for more information contact [Karl Hart](#)

[Learn more about the center at esu-arnic.org_](https://www.esuus.org/get-involved/donate/)

SEPTEMBER



For more information contact [Maryellen Liotta](#).

PROFESSIONAL DEVELOPMENT

Don't miss the opportunity to hear the brilliant Catherine Loomis speak this September 2025! Renowned for her engaging storytelling and deep expertise in Renaissance literature, Ms. Loomis brings history to life with wit, insight, and passion. Whether you're a longtime literature enthusiast or simply curious, her talk promises to enlighten, entertain, and inspire.

This event will serve as a professional development day for teachers, who can attend either in person or online. Join us for a memorable experience that will enrich your understanding and appreciation of Renaissance literature.



UPCOMING EVENTS

SPRING 2026



250th Anniversary

United States Semiquincentennial
The English Speaking Union and the American Revolution

Join us as we celebrate the 250th Anniversary with events nationwide, a student essay contest, limited-edition swag, and more.

Contact Deborah Unger at dunger@esuus.org

Annual General Meeting - NYC
Voices of Liberty: Celebrating 250 Years of the Signing of the Declaration of Independence in the Heart of New York

Join us in New York City this April for the English-Speaking Union's Annual General Meeting as we honor the 250th anniversary of the signing of the Declaration of Independence.

Contact Deborah Unger at dunger@esuus.org

APRIL
23-27, 2026

APRIL
23-27, 2026



25th Anniversary of the ESU House NYC

This year, we mark the 25th anniversary of the ESU House. We will be celebrating this milestone during the ESU's Annual General Meeting, honouring our mission to promote understanding and global friendship through the English language.

Contact Deborah Unger at dunger@esuus.org

THE EARL AND COUNTESS OF DERBY INVITE
THE ENGLISH-SPEAKING UNION TO
A MAGICAL HOLIDAY WEEKEND AT KNOWSLEY HALL
PRESCOT, MERSEYSIDE L34 4AG ENGLAND
NOVEMBER 20-23, 2025

EXECUTIVE PLUS/DELUXE SUITE \$2,800 PP DOUBLE OCCUPANCY, \$3,900 PP SINGLE).
(EXECUTIVE SUITES AT \$2,500 PP DOUBLE / \$3,400 PP SINGLE ARE SOLD OUT)



Celebrate the Magic of the Season at Knowsley Hall

This holiday season, you're cordially invited by the Earl and Countess of Derby to experience an unforgettable weekend of elegance, history, and festive charm at Knowsley Hall—a grand estate nestled in the heart of the English countryside.

Steeped in over 600 years of heritage, Knowsley Hall has been the cherished home of the Stanley family since the 14th century. Set within 2,500 acres of private parkland just outside Liverpool, this historic residence has welcomed royalty and dignitaries since 1495—and now, it opens its doors to you.



Your Weekend Includes: Surround yourself with twinkling lights, roaring fires, and the rich traditions of an English Christmas. Highlights of your stay include:

- A private guided tour of Knowsley's renowned art collection and historic library
- Fireside conversations with Caroline Emma Stanley, Countess of Derby
- A festive traditional Christmas dinner in the grand dining room
- An elegant afternoon tea served in the drawing room
- An indulgent whiskey tasting experience
- A private tour of the Shakespeare North Playhouse
- An optional half-day excursion to Liverpool

Accommodations:

Relax in Regal Comfort Spend three nights in one of Knowsley Hall's exquisitely appointed guest rooms, each uniquely decorated to reflect centuries of aristocratic style and charm. Wake each morning to views of the rolling estate and a delicious full English breakfast.

Let the splendor of Knowsley Hall transport you to a world of seasonal wonder, timeless luxury, and warm hospitality.



Reserve Your Place Today

Availability for this exclusive weekend is limited. Don't miss the rare opportunity to celebrate the magic of the holidays in one of England's most storied estates.

[Click here for more information](#)

For more information or to secure your reservation contact
Rossana Ivanova, rivanova@esuus.org, (862) 224-4244.

* Weekend activities subject to change.



PATRON TOUR 2025

The English-Speaking Union
In Partnership with
Sea Cloud Cruises
Presents

2025 National Patron Tour
Nelson on Shore and at Sea:
A Life of the British Admiral
With Author and Lecturer Flora Fraser

In July, a group of ESU National Patrons embarked on a truly unforgettable voyage aboard the Sea Cloud Spirit, sailing from Naples to Malta under the theme "*Nelson on Shore and at Sea: A Life of the British Admiral.*"

Much of the journey was spent exploring the rich cultural heritage of Sicily, with memorable visits to Trapani, Palermo, Taormina, and Syracuse. From ancient ruins to vibrant markets and breathtaking coastal views, each destination offered a vivid glimpse into the past and present of this remarkable island.

One of the highlights of the tour was the presence of acclaimed Nelson biographer Flora Fraser, who delivered a series of insightful lectures. Her engaging talks brought Admiral Nelson's life and legacy vividly to life and provided historical context that enhanced each excursion.

Of course, the ship itself was part of the magic. Sailing under the full sails of the *Sea Cloud Spirit* was a reminder of the elegance and adventure of travel at sea.

The ESU's National Patron Tours not only offer exceptional experiences but also recognize and thank those whose generous contributions sustain our educational mission. Patron support directly benefits ESU programs that enrich the lives of students, teachers, English language learners, new immigrants, and our entire membership.

We are deeply grateful to all the Patrons who joined us on this remarkable journey—and we look forward to welcoming even more of you on future ESU adventures!



The ESU National Patron Tours

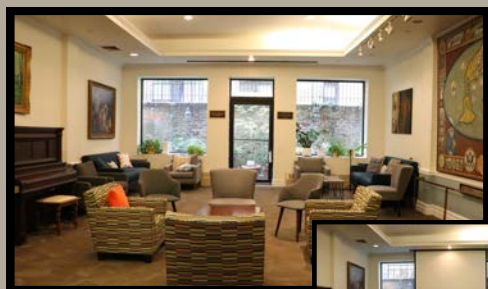
enhance our Patrons' engagement with the ESU community through bespoke experiences of cultural enrichment, educational exploration, and unforgettable adventures.

The English-Speaking Union

promotes cross-cultural understanding, and expands opportunities for students, teachers, English language learners and members through the English language.

contact Rossana Ivanova for more information at
rivanova@esuus.org or (862) 224-4244

THE ESU EVENT AND OFFICE SPACE RENTAL



The Garden Lounge



Discover the ideal venue for your meetings and events at the English-Speaking Union, conveniently located at 144 E 39th St, New York, NY 10016, in the historic Murray Hill neighborhood. Our Midtown Manhattan space features three elegant rooms, adaptable to a variety of events, from corporate meetings to creative workshops.

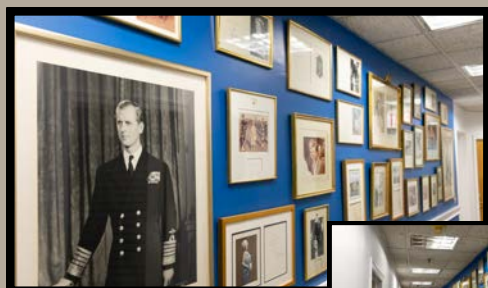
Our rooms feature versatile layouts and modern A/V systems, making it perfect for corporate meetings, creative workshops, and special gatherings.



The Library

[Read more about our Flexible Event and Office Space](#)

[Click here to contact us](#)

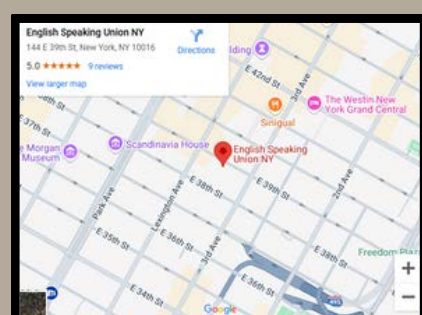


The Photo Wall



The Horizon Room

LOCATION



The Knowledge Space