

NYC BRANCH NEWSLETTER

THE ENGLISH-
SPEAKING UNION

MEMBERSHIP

Become a member today and experience the endless benefits! Join or renew at any time to enjoy uninterrupted access to our programs, receive personalized reminders, and start benefiting immediately. Thank you for your support!



[Renew your membership or join the ESU](#)

[for more information contact DeAndre Short](#)

July Office Hours:

July 28th at 4:00-5:00PM EST

[Click Here](#)



[Visit our NYC Branch Website](#)

THE ENGLISH-SPEAKING
UNION**Discover, Connect, and Thrive with the English-Speaking Union (ESU)**

At the English-Speaking Union, we believe in the transformative power of the English language to unite people across borders, backgrounds, and generations. Through language, we open doors to understanding, collaboration, and lifelong learning.

Whether you're a student, educator, or globally curious individual, there's a place for you in the ESU community. From thought-provoking workshops and speaker events to elegant receptions and international exchanges, every gathering offers a chance to grow, share, and belong.

Don't miss out—mark your calendar and join us on this exciting journey.

Stay tuned for event announcements, and prepare to explore new ideas, build new friendships, and be part of a mission that celebrates the best of global citizenship through the English language.

Join the ESU—where language connects and community thrives.

**DEBATE CAMP
IS IN SESSION!**



For more Information, go to:
nydlsummer.org

for more information contact [Alice Uhl](#)

The ESU New York Debate League Summer Institutes will run from **10AM - 4PM:**

June 23 - 27

at Sixth Street Community Center at 638 East 6th Street

July 7 - 11

at English-Speaking Union at 144 East 39th Street

July 21 - 25

at English-Speaking Union at 144 East 39th Street

WHEN SCHOOL IS OUT,
THE ESU NYDL SUMMER
INSTITUTE IS IN!

Camp is Now in Session!

For the first time, the ESU New York Debate League will offer three week-long debate camps this June & July! The Summer Institute immerses middle schoolers in parliamentary debate, promoting civic engagement, critical thinking, and confident public speaking. Led by top coaches **Evan Streams** and **Grace Campos**, the program offers Fundamentals Labs for beginners and Accelerated Labs for experienced debaters, culminating in a student debate tournament each week.



"The middle school students of our very 1st summer program had a chance to examine current controversies and themselves as debaters. The students' focus and dedication was impressive. We make time for fun, but when we work they all buckle down. With a week of sustained focus, they were able to push further and think more deeply than would be possible in any other setting." - Evan Streams

THE ESU ANDREW ROMAY NEW IMMIGRANT CENTER (ARNIC)

Over 200 New Immigrant Students Graduate from the ARNIC Program

On June 12th, we held a ceremony to recognize our 2025 program graduates of the Andrew Romay New Immigrant Center.



The joyous evening featured speeches and readings from graduates, alumni and teachers. The class of 2025 was the largest since our program began in 2013 with 213 students from 34 countries graduating from the center during the 2024 - 2025 program year.

They all celebrated the accomplishments and improvements they made together over the past year. As student reader Yumo Chen put it, "You're adapting to a world that doesn't always adapt to you." She continued with, "...what truly matters is how you present yourself to the world." We are so proud of our graduates and look forward to seeing the impact they will have in their new communities. We wish them the best and cannot wait to see what the future holds for them!

The graduation was live-streamed for the first time and recorded. You can view the whole ceremony here using this link:
<https://youtu.be/beOC9bVGZcs>

To further support the Andrew Romay New Immigrant Center at the ESU, please consider donating at:
<https://www.esuus.org/get-involved/donate/>

for more information contact [Karl Hart](#)

[Learn more about the center at esu-arnic.org](https://www.esu-arnic.org)

COMING SOON



WRENCH SPEAKER

Don't miss the chance to hear the brilliant Catherine Loomis speak this September 2025! Known for her engaging storytelling and deep expertise in Renaissance literature, Loomis brings history to life with wit, insight, and passion. Whether you're a longtime literature lover or simply curious, her talk promises to enlighten, entertain, and inspire. This is an event you won't want to miss!



TLAB UK: A JOURNEY OF LEARNING AND INSPIRATION

This summer, a select group of educators and lifelong learners will embark on an unforgettable academic adventure through the ESU's TLab program. From the historic halls of Oxford and Edinburgh to the theatrical magic of Shakespeare's Globe, participants will engage with world-class scholars, educators, and theater professionals and return home with fresh ideas, deeper knowledge, and renewed passion for teaching.

Bon Voyage!

Wishing all our 2025 TLab scholars a transformative journey—may you return inspired, energized, and ready to ignite curiosity in your classrooms!



For more information go to:
<https://www.esuus.org/what-we-do/teachers-learning-abroad/>

for more information contact [Alice Uhl](#)



The ESU National Shakespeare Competition

2026 Registration Opens Soon!

The ESU invites you to join the 2026 National Shakespeare Competition, launching in August! Now in its 43rd year, this performance-based program helps high school students build confidence and communication skills through the study and performance of Shakespeare's works. Students from all five New York City boroughs, and over 400 schools nationwide, participated last year. Make your school one of them in 2026!

Professional development workshops are available in the US and UK for participating teachers, with exclusive opportunities for ESU educator members, including TLab UK summer scholarships.



[Click here](#) to learn more and to donate

For more information contact [Maryellen Liotta](#).

ESU HAPPY HOUR

August 20, 2025

Happy Hour: The Battle of Britain

4:00 pm - 5:00 pm EST

Sponsored by ESU Seattle Branch

June, 1940—In the past two months, Nazi Germany has conquered Norway, Denmark, the Netherlands, Belgium, and France. Great Britain stands alone against the formidable German war machine. Now, Germany decides to bring Britain to its knees. In order to do that, Goering's Luftwaffe must win air superiority over the English Channel and Southeast England. The Battle of Britain is about to begin. It is up to the outnumbered British Royal Air Force—"The Few"—to stop the Germans. Please join Seattle's Museum of Flight volunteer Bob Fishman for an in-depth look at a turning point in history.



Register Here

THE ESU PLAYERS

The ESU Players are a dynamic group made up of ESU members and ARNIC students who come together each month to present staged readings of plays. Each performance is preceded by a welcoming reception. It's a wonderful evening of culture, conversation, and community spirit.

All performances are held at
144 East 39th Street, NYC

**Admission is free, but request that you
RSVP by sending an email to
louisemuse4@gmail.com.**



THE EARL AND COUNTESS OF DERBY INVITE
THE ENGLISH-SPEAKING UNION TO
A MAGICAL HOLIDAY WEEKEND AT KNOWSLEY HALL
PRESCOT, MERSEYSIDE L34 4AG ENGLAND
NOVEMBER 20-23, 2025

EXECUTIVE PLUS/DELUXE SUITE \$2,800 PP DOUBLE OCCUPANCY, \$3,900 PP SINGLE).
(EXECUTIVE SUITES AT \$2,500 PP DOUBLE / \$3,400 PP SINGLE ARE SOLD OUT)



Celebrate the Magic of the Season at Knowsley Hall

This holiday season, you're cordially invited by the Earl and Countess of Derby to experience an unforgettable weekend of elegance, history, and festive charm at Knowsley Hall—a grand estate nestled in the heart of the English countryside.

Steeped in over 600 years of heritage, Knowsley Hall has been the cherished home of the Stanley family since the 14th century. Set within 2,500 acres of private parkland just outside Liverpool, this historic residence has welcomed royalty and dignitaries since 1495—and now, it opens its doors to you.



Your Weekend Includes: Surround yourself with twinkling lights, roaring fires, and the rich traditions of an English Christmas. Highlights of your stay include:

- A private guided tour of Knowsley's renowned art collection and historic library
- Fireside conversations with Caroline Emma Stanley, Countess of Derby
- A festive traditional Christmas dinner in the grand dining room
- An elegant afternoon tea served in the drawing room
- An indulgent whiskey tasting experience
- A private tour of the Shakespeare North Playhouse
- An optional half-day excursion to Liverpool

Accommodations:

Relax in Regal Comfort Spend three nights in one of Knowsley Hall's exquisitely appointed guest rooms, each uniquely decorated to reflect centuries of aristocratic style and charm. Wake each morning to views of the rolling estate and a delicious full English breakfast.

Let the splendor of Knowsley Hall transport you to a world of seasonal wonder, timeless luxury, and warm hospitality.



Reserve Your Place Today

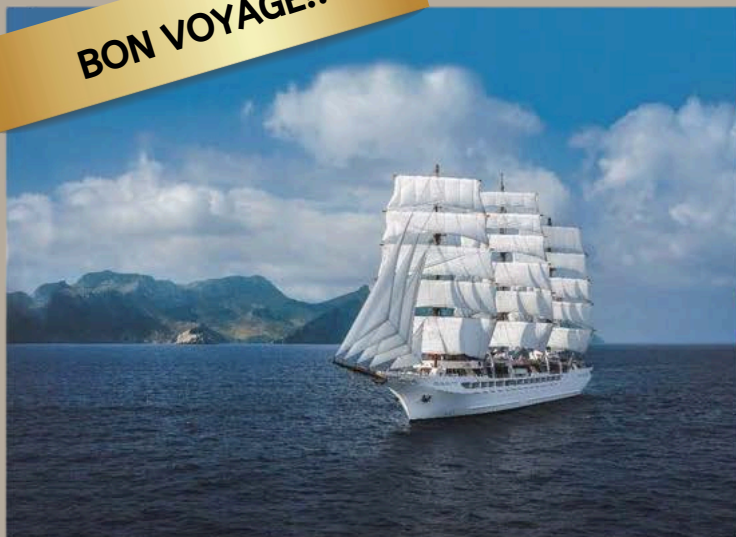
Availability for this exclusive weekend is limited. Don't miss the rare opportunity to celebrate the magic of the holidays in one of England's most storied estates.

[Click here for more information](#)

For more information or to secure your reservation contact
Rossana Ivanova, rivanova@esuus.org, (862) 224-4244.

* Weekend activities subject to change.

BON VOYAGE!!



PATRON TOUR 2025

The English-Speaking Union

In Partnership with

Sea Cloud Cruises

Presents

2025 National Patron Tour
Nelson on Shore and at Sea:
A Life of the British Admiral
With Author and Lecturer Flora Fraser

July 6-14, 2025
Naples to Malta

Aboard Sea Cloud Spirit

Bon Voyage!

As the Sea Cloud Spirit prepares to hoist anchor, we bid a heartfelt bon voyage to all those setting sail on this extraordinary journey through history. Aboard this magnificent vessel, travelers will retrace the footsteps of one of Britain's greatest naval heroes, Admiral Horatio Nelson.

This exclusive voyage—co-hosted by the English-Speaking Union and Sea Cloud Cruises—promises an unforgettable blend of luxury, adventure, and intellectual discovery. We wish our voyagers fair winds, calm seas, and enriching experiences as they embark on this remarkable expedition.

Safe travels and smooth sailing!

The ESU National Patron Tours

enhance our Patrons' engagement with the ESU community through bespoke experiences of cultural enrichment, educational exploration, and unforgettable adventures.



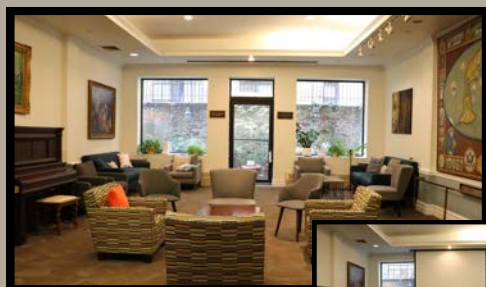
[Click here for information and to view the Tour Brochure](#)

The English-Speaking Union

promotes cross-cultural understanding, and expands opportunities for students, teachers, English language learners and members through the English language.

contact Rossana Ivanova for more information at
rivanova@esuus.org or (862) 224-4244

THE ESU EVENT AND OFFICE SPACE RENTAL

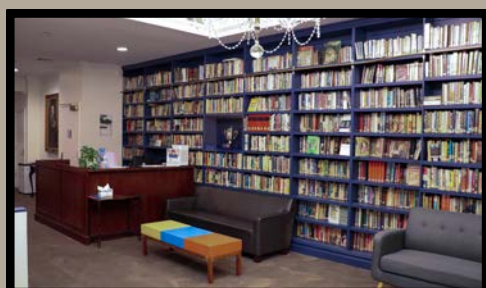


The Garden Lounge



Discover the ideal venue for your meetings and events at the English-Speaking Union, conveniently located at 144 E 39th St, New York, NY 10016, in the historic Murray Hill neighborhood. Our Midtown Manhattan space features three elegant rooms, adaptable to a variety of events, from corporate meetings to creative workshops.

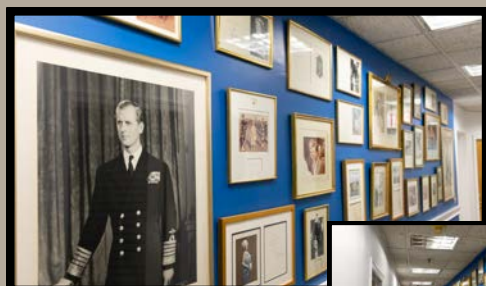
Our rooms feature versatile layouts and modern A/V systems, making it perfect for corporate meetings, creative workshops, and special gatherings.



The Library

[Read more about our Flexible Event and Office Space](#)

[Click here to contact us](#)

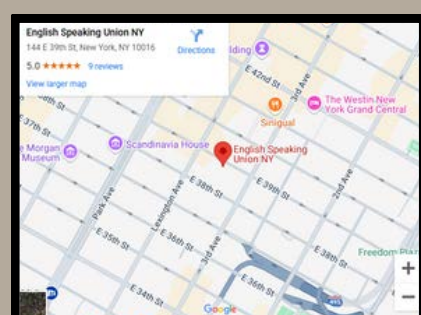


The Photo Wall



The Horizon Room

[LOCATION](#)



The Knowledge Space