

THE ENGLISH-SPEAKING UNION

# 2024 NATIONAL SHAKESPEARE COMPETITION

MITZI E. NEWHOUSE THEATER

AT LINCOLN CENTER THEATER

APRIL 15<sup>TH</sup>, 2024

150 W 65<sup>TH</sup> ST. NEW YORK, NY 10023



THE MITZI E. NEWHOUSE THEATER  
at LINCOLN CENTER THEATER

**New York City - April 15, 2024**

# Letter from the Chairman

Dear ESU National Shakespeare Competition Community,

It is with immense joy and anticipation that I welcome you to the ESU 2024 National Shakespeare Competition.

For over four decades, the ESU National Shakespeare Competition has inspired and challenged young Shakespeare enthusiasts across the nation. It has offered thousands of talented young people the opportunity to showcase their passion, dedication, and hard work while delving into the timeless works of the Bard.

The competition holds a special place in the hearts of students, teachers, and ESU members because it embodies the very essence of the ESU's mission. By providing a platform for students to explore the rich world of Shakespeare's works, develop their speaking and performance skills, and engage in a journey of self-discovery, the competition exemplifies the ESU's commitment to promoting cultural exchange, educational excellence, and lifelong learning. Through the power of Shakespeare's words, this competition not only inspires a love for literature and the arts but also fosters a sense of community, camaraderie, and mutual respect among participants.

To the remarkable young performers who will take center stage at this year's competition, I offer my sincerest congratulations on reaching this significant milestone. You have ascended to the top of the competition's rigorous journey. Your talent, creativity, and dedication are truly commendable, and I have no doubt that you will leave a lasting impression with your performances.

I also want to take a moment to thank the teachers who have nurtured and guided their students, the parents who have offered unwavering support and encouragement, the Branch coordinators who have worked tirelessly to organize the preliminary rounds, the esteemed judges who will have the challenging yet rewarding task of adjudicating with fairness and expertise. Additionally, I extend our deepest appreciation to the generous donors whose support sustains this competition year after year. Your collective contributions are invaluable and deeply appreciated.

Thank you for joining us today. Let's embrace the excitement and celebrate the dedication of our participants. Here's to a memorable and inspiring event that will leave a lasting impact on all of us who are fortunate to witness it. Let the competition begin!



Dr. Quinn Peeper

A handwritten signature in blue ink, which appears to read "Quinn Peeper".

Chairman, ESU National Board of Directors  
The English-Speaking Union

# 2024 Contestants

Contestant Name	ESU Branch	Teacher	School
1. Cameron Murphy	Albany	Rich Johnson	The Albany Academies
2. Amelia Gerdes	Atlanta	Jami Warren	St. Pius X High School
3. Katherine Elizabeth Shaw	Boston	Juliet Bailey	The Rivers School
4. Julia Kaufman	Central Florida	Bambi-Ellen Fadoul	Windermere Preparatory School
5. De'shaun Morris	Central Pennsylvania	Sue Biondo-Hench	Carlisle Area High School
6. Jackson Davis	Charlottesville	Caitlin Pitts	Western Albemarle High School
7. Charis Knoerr	Chicago	Suzanne Knoerr	Valeo Academy
8. Vivian Megenhardt	Cleveland	Scott Sumerak	Shaker Heights High School
9. Corinne du Mont	Colonial NC	Michael McGinn	West Carteret High School
10. Chase Mackay	Denver	Shawn Hann/ Andre Rodriguez	Denver School of the Arts
11. Andre Real	Desert (Palm Springs)	Denis McCourt Stryjewski	Idyllwild Arts Academy
12. Diyaa Dossani	E-Branch	Charlton Gavitt	Booker T. Washington High School for the Performing and Visual Arts
13. Daia Jade Johnson	Greenwich	Benjamin Curns	ACES Educational Center for the Arts
14. Kainoa Kelly	Hawaii	Julia Ogilvie	Iolani School
15. Pierre Madlangbayan	Kansas City	Alice Hilt	Garden City High School
16. Carmen Tate	Kentucky	Brian Hinds	DuPont Manual High School
17. Helen Padgett	Lexington	Justine Mackey	Spotswood High School
18. Bradyn Prisand	Los Angeles	Samantha Howard	Beverly Hills High School
19. Mahta Kohanbani	Memphis	Ashley Bugg Brown	Lausanne Collegiate School
20. Luiza Padoveze Goncalves	Miami	Jessica Fox	Gulliver Prep

Contestant Name	ESU Branch	Teacher	School
21. Arielle Olkhovsky	Michigan	Daniel Dobrovich	Cranbrook Schools
22. Claire Liotta	Monmouth County, NJ	Smita Ganatra	Glen Ridge High School
23. Isabella Rosato	Naples	Gabrielle McQuade	Mason Classical Academy
24. Malachi White	New Orleans	Gary Mendoza	Covington High School
25. Margaret Schumacher	New York City	Zoe Spelman	Dominican Academy
26. Clare Day	Niagara Frontier (Buffalo)	Diana Gruninger	Kenmore West High School
27. AJ Wyatt	Oklahoma City	Amber Harrington	Thomas Edison Preparatory School
28. Austin Tindell	Palm Beach	Stephanie Nixdorf	Boca Raton High School
29. Casey Fosbenner	Philadelphia	Patricia Sack	Merion Mercy Academy
30. Avery Larsen	Phoenix	Shira Schwartz	Basha High School
31. Serenity Franke	Portland	Danielle Potter	McMinnville High School
32. Amelia Sentveld	Princeton	Jill Brown	Princeton Day School
33. Georgia Howard	Research Triangle NC	Laura Levine	Apex High School
34. Valeria Rosado Vega	Rhode Island	Deloris Grant	Central Falls High School
35. Curren Aldrich	San Diego	Kim Strassburger	Coronado School of the Arts
36. Evelyn Hall	San Francisco	Rodney Franz	Marin School of the Arts
37. Hadley Luckie	Sandhills	Aaron Coston	Union Pines High School
38. Bee Wipper	Savannah	Kathleen Turner	Richmond Hill High School
39. Aneesha Needamangala	Seattle	Sarah Fitzpatrick	The Overlake School
40. Nne Ezi Okike	St. Louis	Gabriel McManus	Principia School
41. Lucy Wright	Syracuse	Alissa Elmer	Tully High School
42. Adriana Batista	Tucson	Jennifer Davis	Marana High School
43. Kat Pascual	Washington, DC	Chris Whitney	Fairfax High School
44. Willow Peyton	West Virginia	Amber Campano	St. Marys High School

# Semi-Finals Schedule

8:30AM – 1:00PM

## The Judges

**James Elliot** - Actor, Director and Classics Professor at Pace University

**Melinda Hall** - Director, Actor, Producer at Willful Pictures

**John Way** - Actor and ESU National Shakespeare Competition Alumnus

**Dathan B. Williams** - Director, Playwright, Educator and former Associate Artistic Director for the Harlem Shakespeare Festival

## Program

### Welcome

Karen Karpowich, President/Executive Director of the ESU

### Introduction of judges and competition rules

### Semi-Final Competition

44 contestants perform their monologue and sonnet

First Session - Contestants 1-15

*Break*

Second Session - Contestants 16-30

*Break*

Third Session - Contestants 31-44

### Judges retire to deliberate



# Finals Schedule

4:00PM – 6:00PM

## The Judges

**Ian Belknap** - Actor and Director

**Dana Ivey** - Five-time Tony-nominated Actress

**Dr. Catherine Loomis** - Professor, Author and Shakespeare Scholar

**Mary Way** - Former Executive Director of the Southwest Shakespeare Company and ESU Board Member

## Program

### Welcome

Karen Karpowich, President/Executive Director of the ESU

### Introduction of judges and competition rules

### Final Competition

Top 10 finalists perform their monologue and sonnet

### Judges retire to deliberate

### Presentation by the "I AM Shakespeare" Sonnet Writing Competition Winner

Bhairav Lekkala, Livingston High School, NJ

### People's Choice Award

Sponsored by the ESU Cleveland Branch

### Announcement of Winners

### Presentation of Prizes

**THIRD PLACE:** Cash Prize of \$1000

**SECOND PLACE:** American Shakespeare Center Theatre Camp

**FIRST PLACE:** British American Drama Academy Mid-Summer Conservatory Program

### Presentation of the ESU National Shakespeare Competition Cup

### Closing Remarks

*Program subject to change*

## 2024 ESU NSC Judges

### Ian Belknap



is a director and writer. He was the artistic director of the Tony Award-winning itinerate theatre *The Acting Company* from 2012-2021. He has directed a wide-range of dramatic literature including the premiere of Marcus Gardley's *X: or, Betty Shabazz vs. The Nation* (Lortel, Drama Desk, Audelco nominations); the premiere of Jeffrey Hatcher's *A Connecticut Yankee in King Arthur's Court* and *Malvolio* by Betty Shamieh; Sean O'Casey's *The Shadow of a Gunman*; *Hamlet, Of Mice and Men, Romeo and Juliet, Love's Labour's Lost, As You Like It, Twelfth Night, and Julius Caesar*, among many others. His work has been seen from coast to coast in small towns and large US Cities on tours with *The Acting Company*, in addition to productions at the Classical Theatre of Harlem, New Victory Theatre, Pearl Theatre, Guthrie Theater, Hudson Valley Shakespeare Festival, Shakespeare Theatre of New Jersey, Boise Contemporary Theater, Resident Ensemble Players (Delaware), The Juilliard School, NYU GRAD Acting, among others.

### James Elliott



has happily directed or acted in fifteen of Shakespeare's plays. Some of his more memorable acting roles include Petruchio, Hamlet, Romeo, Malvolio and Cassio. He started his directing career with *As You Like It*, before moving onto critically successful runs of *A Midsummer Night's Dream* and *Twelfth Night*. Current Teaching: Classics at Actor's Studio, Drama School at Pace University, American Musical and Dramatic Academy, Cooper Union and the Terry Knickerbocker Studios. Past Teaching: Fairleigh Dickinson, University of Texas, MIT, Juniata College, University of Tennessee, Norfolk School of the Arts and NY Film Academy. Master class in acting for Taiwan Performing Arts Center in Taipei. He is the founder and host of *The State of Shakespeare*; a podcast about how to approach Shakespeare and much more. [www.stateofshakespeare.com](http://www.stateofshakespeare.com)

## 2024 ESU NSC Judges

### Melinda Hall



is an artist who expresses herself as a writer, director, and actor. She has written and directed for stage, video and film. Ms. Hall created and produces the Annual Shakespeare's Birthday Sonnet Slam which is in its 14th year and will be held April 20, 2024 at The Riverside Church. [www.sonnetslam.com](http://www.sonnetslam.com) / Insta: @shakespearesonnetslam She is a member of SAG-AFTRA (where she has been the Shakespeare moderator at their NYC Conservatory for over 10 years), AEA and The Dramatist Guild. Melinda currently teaches a Deep Dive Shakespeare course online for professional actors that focuses on the early modern period. She is a Reader at the Folger Shakespeare Library and a passionate autodidact.

### Dana Ivey



has worked in the US and Canada since 1965. She has received five Tony nominations: for *Heartbreak House* and *Sunday in the Park* in the same year, and for *The Last Night of Ballyhoo*, *The Rivals* and *Butley*. She received an Obie Award for creating the role of Daisy in *Driving Miss Daisy*, for *Mrs. Warren's Profession* and for *Quartermaine's Terms*. On Broadway, she also appeared in *Present Laughter*, *Waiting in the Wings*, *Pack of Lies*, *Henry IV*, *Sex and Longing*, *The Rivals*, *Heartbreak House*, *Major Barbara*, and *The Importance of Being Earnest*. She played Gertrude to Kevin Kline's Hamlet and was Big Mama at the Kennedy Center in *Cat on a Hot Tin Roof*. She most recently played Mrs. Candor in *School for Scandal* for the Red Bull Theatre. In 2008, she was inducted into the Theatre Hall of Fame and received an honorary doctorate from Rollins College. Among her films are *Addams Family*, *Legally Blonde 2*, *Rush Hour 3*, *Ghost Town*, *Sabrina*, *Two Weeks Notice*, *The Color Purple* and *The Help*.

## 2024 ESU NSC Judges

### Catherine Loomis



holds an MA from the Shakespeare Institute and a PhD from the University of Rochester. She was a tenured full professor at the University of New Orleans (1997-2017) and has also taught at the University of North Carolina at Greensboro (2006-2008) and the Rochester Institute of Technology (2017-2020). She is the author of *William Shakespeare: A Documentary Volume* (Gale, 2002) and *The Death of Elizabeth I: Remembering and Reconstructing the Virgin Queen* (Palgrave, 2010) as well as numerous scholarly articles on Shakespeare and Queen Elizabeth I. She and Sid Ray edited the collection *Shaping Shakespeare for Performance: The Bear Stage* (Fairleigh Dickinson University Press, 2015). She is a member of the Shakespeare Birthplace Trust's Advisory Board on Women in Shakespeare's Life.

### John Way



graduated from Carnegie Mellon University (with Honors) in 2017 and immediately began his acting career. He has appeared in a number of award-winning films that have played at Sundance, Berlin, Telluride and other major festivals and now can be found on major streaming platforms. John has acted alongside Lily Gladstone, Sydney Sweeney, Jacob Elordi, Dale Dickey and David Arquette and has worked with directors Paul Schrader, Matthew Weiner and Mariama Diallo. He is currently producing a film alongside Lily Gladstone. John has a lifelong love affair with Shakespeare. In addition to Carnegie Mellon, John has studied Shakespeare at both LAMDA and RADA, where he received the Gold Accreditation (with merit). John has appeared in numerous roles in Shakespeare's canon, most recently appearing as Benedick in *Much Ado About Nothing*. John is also a proud alumnus of the ESU National Shakespeare Competition, competing and winning the People's Choice Award a few years ago!

## 2024 ESU NSC Judges

### Mary Coleman Way



has dedicated the past nine years to leading Southwest Shakespeare Company, where she has made a lasting impact on the theater community. As a multifaceted artist, she is a member of the League of Professional Theater Women, an NEA adjudicator, and a frequent participant in classical theater auditions and regional ESU, Kennedy Center and HSMT competitions. She is also a writer for film, stage, and television, a director, composer, and administrator. Mary's commitment to the arts is furthered through her active involvement on the Boards of Arizona Citizens for the Arts, Southwest Shakespeare Company, and the National Board of the English Speaking Union. She is also a member of the International Shakespeare Theater Association. Her contributions to the arts have been recognized with a number of awards, including the "Jerry" Award from Arizona State University and the Governor's Arts Award for Arizona. Beyond Shakespeare, Mary, alongside her husband, founded a movie production company that has expanded to include Broadway and TV.

### Dathan B. Williams



is a multi-dimensional theater practitioner. He was the Associate Artistic Director of The Harlem Shakespeare Festival (2011 - 2020) where he served as the Director of Education, text coach, Dramaturge/Adaptor and Director. His recent Director credits include: Regional: *Measure for Measure* for Flagler College, *Moana, Jr.* for Rubicon Theater and Director/Playwright of *Shall I Compare Thee: The Sonnet Project for Southwest Shakespeare Company* (nominated for Best new Play 2022 Arizona Broadway World). Off-Broadway: *Me and Steppin'* (The New Federal Theater). He has been a Sub-Adjunct Theater Professor at Brooklyn, Hunter and City Colleges and Syracuse University and was a RPTA at Cornell University. In 2022 he was awarded the Next Generation BIPOC Emerging Leaders of Color Award by the Shakespeare Theater Association. He is a proud member of SDG, AEA, SAG/AFTRA, CAEA and STA.

2024 ESU National Shakespeare Competition Branch Champions



**Cameron Murphy**  
Albany Branch  
The Albany Academies  
Richard III, Richard  
Sonnet 87

**Amelia Gerdes**  
Atlanta Branch  
St. Pius X High School  
Titus Adronicus, Tamora  
Sonnet 29



**Katherine Elizabeth Shaw**  
Boston Branch  
The Rivers School  
Hamlet, Ophelia  
Sonnet 34

**Julia Kaufman**  
Central Florida Branch  
Windermere Preparatory School  
Twelfth Night, Viola  
Sonnet 116



**De'shaun Morris**  
Central Pennsylvania Branch  
Carlisle High School  
Coriolanus Martius, later Coriolanus  
Sonnet 149

2024 ESU National Shakespeare Competition Branch Champions



**Jackson Davis**  
Charlottesville Branch  
Western Albemarle High School  
Richard III, Richard  
Sonnet 71

**Charis Knoerr**  
Chicago Branch  
Valeo Academy  
The Two Gentlemen of Verona, Julia  
Sonnet 27



**Vivian Megenhardt**  
Cleveland Branch  
Shaker Heights High School  
Hamlet, Hamlet  
Sonnet 76

**Corinne du Mont**  
Colonial NC Branch  
West Carteret High School  
The Taming of the Shrew, Katherine  
Sonnet 29



**Chase Mackay**  
Denver Branch  
Denver School of the Arts  
Romeo and Juliet, Romeo  
Sonnet 29

2024 ESU National Shakespeare Competition Branch Champions

**Andre Real**

Desert (Palm Springs) Branch  
Idyllwild Arts Academy  
A Midsummer Night's Dream, Lysander  
Sonnet 104



**Diyaa Dossani**

E-Branch  
Booker T. Washington High School  
for the Performing and Visual Arts  
A Midsummer Night's Dream, Hermia  
Sonnet 53



**Daia Jade Johnson**

Greenwich Branch  
ACES Educational Center for the Arts  
Romeo and Juliet, Juliet  
Sonnet 80



**Kainoa Kelly**

Hawaii Branch  
Iolani School  
Romeo and Juliet, Juliet  
Sonnet 29



**Pierre Madlangbayan**

Kansas City Branch  
Garden City High School  
Othello, Emilia  
Sonnet 71



2024 ESU National Shakespeare Competition Branch Champions

**Carmen Tate**

Kentucky Branch  
DuPont Manual High School  
As You Like It, Phoebe  
Sonnet 21



**Helen Padgett**

Lexington Branch  
Spotswood High School  
Henry VIII, Queen Katherine  
Sonnet 18



**Bradyn Prisand**

Los Angeles Branch  
Beverly Hills High School  
Twelfth Night, Viola  
Sonnet 58



**Mahta Kohanbani**

Memphis Branch  
Lausanne Collegiate School  
The Tempest, Caliban  
Sonnet 80



**Luiza Padoveze Goncalves**

Miami Branch  
Gulliver Prep  
Romeo and Juliet, Juliet  
Sonnet 27





2024 ESU National Shakespeare Competition Branch Champions



**Arielle Olkhovsky**  
Michigan Branch  
Cranbrook Schools  
A Midsummer Night's Dream, Helena  
Sonnet 21



**Claire Liotta**  
Monmouth, NJ Branch  
Glen Ridge High School  
As You Like It, Rosalind  
Sonnet 29



**Isabella Rosato**  
Naples Branch  
Mason Classical Academy  
Henry VI, Part 3, Queen Margaret  
Sonnet 40



**Malachi White**  
New Orleans Branch  
Covington High School  
Othello, Othello  
Sonnet 17



**Margaret Schumacher**  
New York City Branch  
Dominican Academy  
Twelfth Night, Viola  
Sonnet 116

2024 ESU National Shakespeare Competition Branch Champions



**Clare Day**  
Niagra/Buffalo Branch  
Kenmore West High School  
Romeo and Juliet, Juliet  
Sonnet 54



**AJ Wyatt**  
Oklahoma City Branch  
Thomas Edison Preparatory School  
The Tempest, Trinculo  
Sonnet 18



**Austin Tindell**  
Palm Beach Branch  
Boca Raton Community High School  
All's Well That Ends Well, Parolles  
Sonnet 137



**Casey Fosbenner**  
Philadelphia Branch  
Merion Mercy Academy  
Hamlet, Hamlet  
Sonnet 99



**Avery Larsen**  
Phoenix Branch  
Basha High School  
Richard II, King Richard  
Sonnet 128

2024 ESU National Shakespeare Competition Branch Champions

**Serenity Franke**

Portland Branch  
McMinnville High School  
Antony and Cleopatra, Cleopatra  
Sonnet 91



**Amelia Sentveld**

Princeton Branch  
Princeton Day School  
Much Ado About Nothing, Beatrice  
Sonnet 91



**Georgia Howard**

Research Triangle Branch  
Apex High School  
All's Well That Ends Well, Helen  
Sonnet 137



**Valeria Rosado**

Rhode Island Branch  
Central Falls High School  
Measure for Measure, Isabella  
Sonnet 132



**Curren Aldrich**

San Diego Branch  
Coronado School of The Arts  
Henry IV, Part 2, Prince Hal  
Sonnet 65



2024 ESU National Shakespeare Competition Branch Champions

**Evelyn Hall**

San Francisco Branch  
Marin School of the Arts  
The Two Noble Kinsmen, Jailer's Daughter  
Sonnet 71



**Hadley Luckie**

Sandhills Branch  
Union Pines High School  
Romeo and Juliet, Romeo  
Sonnet 6



**Bee Wipper**

Savannah Branch  
Richmond Hill High School  
The Tempest, Trinculo  
Sonnet 147



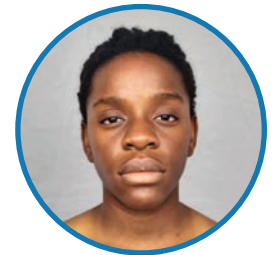
**Aneesha Needamangala**

Seattle Branch  
The Overlake School  
Macbeth, Lady Macbeth  
Sonnet 19



**Nne Ezi Okike**

St. Louis Branch  
Principia School  
A Midsummer Night's Dream, Bottom  
Sonnet 57



## 2024 ESU National Shakespeare Competition Branch Champions



**Lucy Wright**  
Syracuse Branch  
Tully Junior Senior High School  
Macbeth, Macbeth  
Sonnet 27



**Adriana Batista**  
Tucson Branch  
Marana High School  
Macbeth, Witches  
Sonnet 15



**Kat Pascual**  
Washington, DC Branch  
Fairfax High School  
Much Ado About Nothing, Beatrice  
Sonnet 21



**Willow Peyton**  
West Virginia Branch  
St Marys High School  
Julius Caesar, Portia  
Sonnet 55



My grandfather competed in a similar national oratory event when he was in high school in the 1950s. He lived a colorful, adventurous life, but even in his elder years, that competition was something he remembered so fondly. I hope we all make treasured memories together that we will carry on through our whole lives.

## The 2024 ESU National Shakespeare Competition was made possible by generous donations from:

### PLATINUM

Mr. Donald A. Best  
Mr. and Mrs. William W. Caruth III  
Ms. Karen Karpowich and  
Mr. Ian Calderon  
Dr. E. Quinn Peeper and Mr.  
Michael D. Harold  
Dr. Julia Churchill Van de Water

### GOLD

ESU Central Florida Branch  
Cleveland ESU,  
*Sponsor of the 2024 People's  
Choice Award First Prize*  
Susan Ferris  
The Jesse and Dorothy  
Hartman Foundation  
ESU Denver Branch,  
*Sponsor of the 2024  
ESU National Shakespeare  
Competition Broadway  
Experience*  
Dr. Susan Robin Sinclair

### SILVER

Dr. Loveday Conquest and  
Mr. Fred Kleinschmidt  
Mrs. Natalie T. Pray  
Mrs. Mary Coleman Way and  
Mr. Bill Way

### FRIENDS

ACES Educational Center  
for the Arts, New Haven, CT  
Mr. and Mrs. Rob Andrejko  
ESU Atlanta Branch  
Ms. Lee Cataluna,  
ESU Charlottesville Branch

Denver School of Arts,  
Denver, CO  
The Edison Eagle Theatre  
Company, Tulsa, OK  
Mr. John W. Ewell  
Ms. Anne Gregg  
Ms. Dana Ivey  
ESU Kansas City Branch  
Ms. Julie Kaufman  
Ms. Narine Kchikian  
Ms. Julie Larsen  
Prof. Mark Lawhorn and  
Ms. Lynn Haff  
Ms. Laura Levine  
Mrs. Maryellen Liotta  
Ms. Ashley Luckie  
Ms. Erin Mackay  
Merion Mercy Academy,  
Philadelphia, PA  
Ms. Patricia Ann Moore  
ESU New Orleans Branch  
Ms. Frances Pascual  
Ms. Marnie Alexenburg Prisand  
Mr. Marc Rambeau  
Ms. Cynthia Radford  
ESU Research Triangle  
NC Branch  
Ms. Angela Rubin  
St. Marys High School,  
St. Marys, WV  
ESU San Francisco Branch  
ESU Savannah Branch  
Mr. Jeffrey Schnabel  
Mr. Gerald Sentveld  
Dr. and Mrs. James Stark  
ESU Syracuse Branch  
Western Albemarle High School,  
Crozet, VA

We thank the generous donors to the ESU Centennial National Shakespeare Endowment Fund!

**Marken Family Trust  
Dr. Loveday Conquest  
and Mr. Fred Kleinschmidt  
Dr. Julia Churchill  
Van de Water**

\*\*\*

ESU Atlanta Branch  
Dr. Paul Beresford-Hill, CBE, KSt.J  
Mr. Donald Best  
ESU Boston Branch  
ESU Central Florida Branch  
Mr. and Mrs. Philip G. Cox  
ESU Denver Branch  
Ms. Erika Ishii  
ESU Kentucky Branch in memory  
of Mr. Gene Paul Stotz  
Mr. Mark Lawhorn and  
Ms. Lynn Haff  
Mr. Darryl R. McCormick  
ESU Naples Branch  
ESU New Orleans Branch  
Dr. E. Quinn Peeper  
Mrs. Natalie Pray  
ESU Providence Branch  
Mr. John J. Raffaeli Jr.  
Dr. Susan Robin Sinclair  
Mrs. Mary Coleman Way and  
Mr. Bill Way

\*\*\*

Mr. and Mrs. Rob Andrejko  
Mr. P. Robert Bale  
Mr. and Mrs. John Barnes  
Ms. Janifer Bennett  
Ms. Yvonne Benn-McElderry  
Mrs. Ann V. Bersson  
Dr. Karen Blair-Brand  
Mr. Patrick Cather  
Mrs. Marilyn Chlup  
Mrs. Thomas Hal Clarke  
Mr. and Mrs. Ralph A. Cohen

Ms. Robin Dautrich  
Ms. Anna Erendzhenova  
Mr. and Mrs. Arthur F. Evans  
Mr. Timothy L. Fields and  
Mr. Chris Bergeaux  
Mr. Robert Amott and  
Ms. Janice Flanagan  
Ms. Victoria Hairston  
Mr. and Mrs. George Halyak  
Ms. Arthene Hammerman  
Ms. Karlee Hilliard  
Ms. Edith Honig  
Ms. Kaitlyn Huczko  
Dr. Jerry Huff  
Mrs. Barbara W. Hughes  
Ms. Loreta R. Jackson  
Mr. Miles Hutton Jacoby  
Mr. and Mrs. Theodore Jarosz  
Mr. Nick Leo  
Mr. and Mrs. Charles H. Maddrey  
Ms. Glenda McClure  
Ms. Janice D. McClure  
Ms. Ruth B. McDaniel  
Ms. Scottie E. McDaniel  
Ms. Amy McKenney  
Mr. and Mrs. Joseph H. McLure  
Ms. Judith Miller  
Shakespeare Study Group  
Mrs. Donna M. Miller  
Mrs. Gloria Early-Norris  
Mr. Gary S. Oaks  
Ms. Valerie O'Riordan  
Ms. A. B. Orthwein  
Dr. Manning M. Pattillo, Jr. PhD  
Ms. Pauline Perkins  
Mrs. Quinland Daniels Porter  
Dr. and Mrs. John W. Schott  
Dr. Bethany Sinnott  
Ms. Kristin Stewart  
Ms. Zinaida Taran  
Ms. Suzanne Livesay  
Mrs. Joan Ramsey and Mr. Bud Swiger  
Mr. and Mrs. James Wesner  
Mr. Marc Wheat, Esq.  
Ms. Katherine Wicker  
Mrs. Deborah Williams  
Dr. Nancy M. Williams  
Dr. and Mrs. James P. Wilson  
Mr. and Mrs. Benjamin Woznick

## Dr. Paul Beresford-Hill Cup



The historic hallmarked silver Cup was made in London, during 1933, in the reign of King George V by the renowned firm of Richard Comyns

*"When I started the Shakespeare competition in 1983, I really didn't have any idea as to the number of students from across America whose knowledge and love of Shakespeare would be encouraged by this effort. And now, I am equally amazed that even a global pandemic cannot stop the power and influence of Shakespeare from allowing young adults like yourselves to take his words, interpret them, and then present them to the world."*

**Dr. Paul Beresford-Hill,  
addressing the 2021 ESU  
National Shakespeare  
Competition audience**

**We thank the generous donors to the ESU Centennial  
National Shakespeare Endowment Fund**

The English-Speaking Union would like to thank our National Shakespeare Competition Branch Coordinators. Without your dedication and hard work, our 44 finalists would not be here today!

Sharon Calka  
 Randy Brannen  
 Paul Boghosian  
 Brett Carrier  
 Cynthia Mazzant  
 Deb Pruiett  
 Ann Marie Klein  
 William Kennedy  
 Bob Husson  
 Cynthia Poinsett  
 Allyson Boylan  
 Anne Elser  
 Mark Lawhorn  
 Daniel Bukovac  
 Georgette Kleier  
 Barbara Walker  
 Leigh Hansen  
 Patricia Corbitt  
 Jessica Fox  
 Andy McGinn  
 Tom Cox  
 Jeanine Brakefield  
 Bruce Gordon  
 Al Franco  
 Paul Stevenson  
 Lissen Ellington  
 Judith Francis  
 Grant Mudge  
 Frances Lancefield  
 Irene Fitzpatrick  
 Laura Levine  
 Mycah Hogan  
 Courtney Flannagan  
 Rodney Franz  
 Andrea Burns  
 Diane Brennen  
 Loveday Conquest  
 Janet Baldwin  
 Barbara Weller  
 Alicia Fodor  
 Donovan Arizmendi  
 Jason Young

Albany  
 Atlanta  
 Boston  
 Central Florida  
 Central Pennsylvania  
 Charlottesville  
 Chicago  
 Cleveland  
 Colonial NC  
 Denver  
 Desert Palm Beach  
 Greenwich  
 Hawaii  
 Kansas City  
 Kentucky  
 Lexington  
 Los Angeles  
 Memphis  
 Miami  
 Michigan  
 Monmouth  
 Naples  
 New Orleans  
 Niagra  
 Oklahoma City  
 Palm Beach  
 Philadelphia  
 Phoenix  
 Portland  
 Princeton  
 Research Triangle  
 Rhode Island  
 San Diego  
 San Francisco  
 Sandhills  
 Savannah  
 Seattle  
 St. Louis  
 Syracuse  
 Tucson  
 Washington DC  
 West Virginia

ESU  
 USA

We Are So Proud.

CENTRAL  
 FLORIDA  
 BRANCH

*Congratulations, Julia!*

The Central Florida ESU is honored for **Julia Kaufman** to represent our branch in the finals. We also applaud Julia's family, as well as Windermere Prep sponsor, BambiEllen Fadoul, for paving the way to Julia's success through their support and coaching.

*Thank you all for your dedication to the ideals of the ESU.*



The Denver Branch of the English-Speaking Union is proud to be represented by Chase Mackay, student of Shawn Hann at Denver School of the Arts. We wish Chase the best of luck at the 2024 National Shakespeare Competition, and we want to commend both Chase and runner-up Talia Knoshaug from Lakewood High School for their outstanding performances at the 2024 Denver Branch Shakespeare Competition. We thank the Denver Center for the Performing Arts for partnering with us, and we send special thanks to Cindy Poinsett, Millicent Ambroggio and Cami Van Anne for their extra effort organizing the Denver Branch Competition.



We Doth Say, Congratulations!

Merion Mercy Academy is enormously proud of our Philadelphia Branch competition finalists, Casey Fosbenner (1st) and Alex Segreti (2nd). We congratulate them and teacher Patricia Sack, and wish Casey all the best in the national competition.



**MERION MERCY ACADEMY**



*The staff of St. Marys High School  
wish to congratulate*

# Willow Peyton

*on her well-deserved accolades and achievements!*

*'All the world's a stage, and all the men and women merely players.  
They have their exits and their entrances;  
And one man in his time plays many parts.'  
As You Like It*

*Thank you for the part you played in our lives and  
for representing our school as well as the  
great state of West Virginia!*



Congratulations, Julia! Your exceptional achievements, determination, and tireless dedication are inspiring. Your passion for Shakespeare shines through in your portrayal of Viola, showcasing your immense talent and profound understanding of Shakespeare's work as an actor and scholar. As you represent the Central Florida branch, your loved ones wish you continued success!



From 5<sup>th</sup> grade fairy in A Midsummer Night's Dream to the National Shakespeare Competition.

Amelia, we are so proud of you!

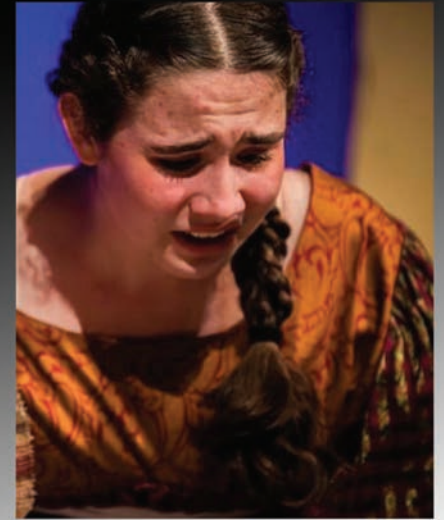
Mom and dad.



The Kansas City Branch congratulates its Shakespeare Competition winner, Pierre Madlangbayan, Garden City High School!



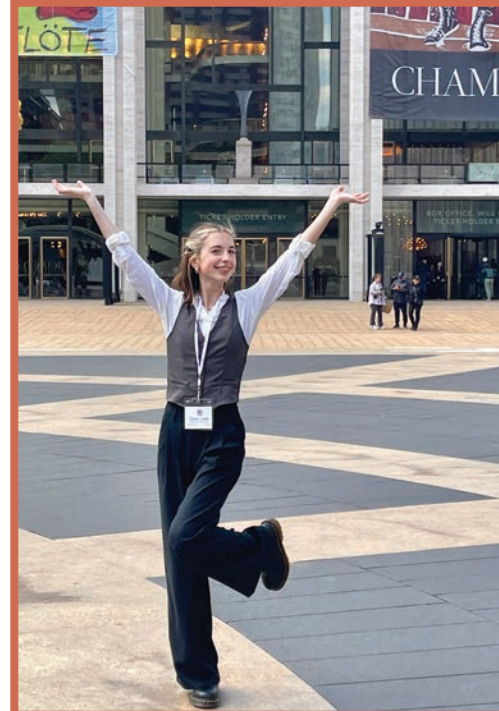
*"And though she be but little she is fierce"*



**Congratulation Arielle Olkhovsky!**



Congratulations Hadley! Your love of the arts started young and continued through the years. Your hard work earned this well-deserved opportunity and inspired us all.



Congratulations Claire! Your hard work and dedication have paid off. Now knock 'em dead at Lincoln Center!

Love,  
Mom, Dad & the Boys





Congratulations  
our dearest Kat!  
You make us proud  
every day!  
You are and always  
be our bright,  
shining star!  
We love you to the  
moon and back!  
Mom, Dad, and  
Kuya Ryan



Congratulations,  
Avery, for winning  
the Phoenix ESU  
competition and  
representing  
Arizona in  
New York!  
Your family is so  
proud of your  
passion and  
work ethic.



To our favorite  
BARD.  
We love you!  
Congratulations  
Chase Mackay on  
this exceptional  
accomplishment.  
Love, Your Family  
and Denver School  
of the Arts



Congratulations  
Kainoa Kelly  
Hawaii Branch  
Winner 2024  
Iolani School  
Teacher -  
Julia Ogilvie



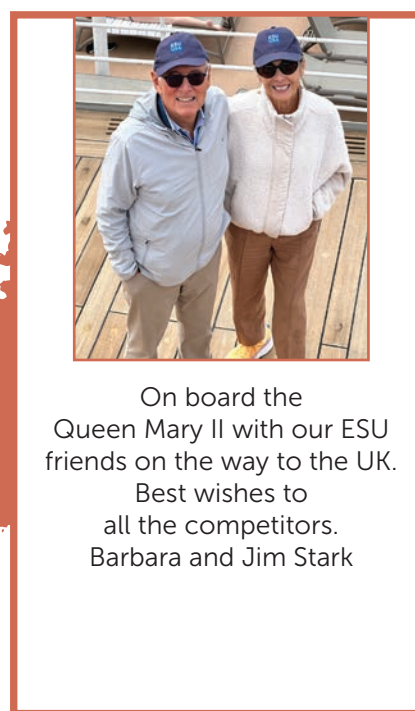
Break a leg, AJ  
From the Edison  
Eagle Theatre  
Company!



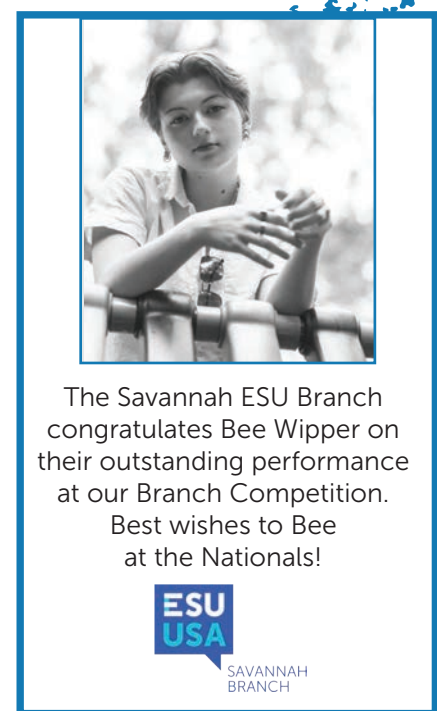
The Atlanta  
ESU Branch  
congratulates  
Miss Amelia  
Gerdes on her  
outstanding  
performance  
at our Branch  
Competition.  
Best wishes to her  
at the Nationals!



Malachi -  
Congratulations on  
your performance  
in the NSC! Break  
a leg as you bring  
Shakespeare's  
timeless language  
to life on stage.  
The NOLA Branch  
is so proud!



On board the  
Queen Mary II with our ESU  
friends on the way to the UK.  
Best wishes to  
all the competitors.  
Barbara and Jim Stark



The Savannah ESU Branch  
congratulates Bee Wipper on  
their outstanding performance  
at our Branch Competition.  
Best wishes to Bee  
at the Nationals!





Congratulations Jackson Davis!  
 From all your theatre family at Western Albemarle High School, we are SO proud of you and always SO entertained by you! You keep us laughing and we love you!!  
 We can't wait to see what you accomplish next!



The Cleveland Branch is proud to be represented for a second year by our winner Vivian Megenhardt!  
 Break a leg and enjoy the experience, the 2<sup>nd</sup> time is charmed.



Brady, from the first time you stepped on stage, we knew you were home. Your dedication & talent have brought you to this incredible moment at Nationals, representing Los Angeles. Bravo! Love, Mommy, Daddy, Cosie, & all of your Grandparents♥

ACES Educational Center for the Arts New Haven, CT congratulates  
**Daia Jade Johnson**  
**Class of 2024**  
 as a finalist in the 2024 ESU National Shakespeare Competition Program at Lincoln Center.  
 Your community is proud of you, and we are cheering you on!

“ I’m absolutely thrilled to be going on this adventure and I can’t wait to meet many new people from all over the country and bond over our love of acting and performance! Here’s to a fantastic weekend, so many laughs, and creative Instagram caption I will come up with later!

*Evelyn Hall  
 San Francisco Branch*



The ESU Syracuse Branch congratulates Lucy Wright on her outstanding achievement. Lucy's sponsoring teachers, Alissa and Emily have enjoyed watching her skills grow, and wish her luck.



Congratulations and best wishes for Georgia Howard's performance "All's Well That Ends Well", sonnet 137. From the Research Triangle Branch



**BADA** BRITISH AMERICAN DRAMA ACADEMY

Transformative Theatre Programs

**SUMMER INTENSIVES**

- BLACK BRITISH THEATRE & PERFORMANCE PROGRAM**  
Participants 18+
- GREEK THEATRE PROGRAM**  
Participants 18+
- MIDSUMMER CONSERVATORY PROGRAM**  
Actors 16 - 18
- MIDSUMMER IN OXFORD PROGRAM**  
Actors 18+

**SEMESTER PROGRAMS**

- LONDON THEATRE PROGRAM**  
College Juniors & Seniors

[www.bada.org.uk](http://www.bada.org.uk)



**AMERICAN SHAKESPEARE CENTER**

**THEATRE CAMP**

**EXPERIENCE A SUMMER LIKE NO OTHER—  
IN A THEATRE THAT IS LIKE NO OTHER.**

The ASC Theatre Camp empowers high school students to leap into college life and learning with a secure safety net. With Shakespeare's text and technology as our touchstone, the ASCTC experience boasts a unique combination of performance training, academic exploration, and the opportunity to meet minds sharing the same passion and persistence.



**LEARN MORE!**

**WWW.AMERICANSHAKESPEARECENTER.COM/CAMP**

Photos by Lindsay Wagner, Miscellaneous Media Photography

## The Morgan Library & Museum

### Spring-Summer 2024 Exhibitions:

- ◊ Seen Together: Acquisitions in Photography
- ◊ Beatrix Potter: Drawn to Nature
- ◊ Walton Ford: Birds and Beasts of the Studio
- ◊ Liberty to the Imagination: Drawings from the Eveillard Gift
- ◊ Crafting the Ballets Russes: The Robert Owen Lehman Collection
- ◊ Far and Away: Drawings from the Clement C. Moore Collection



Irving Penn, (1917–2009) Miyake Fashion, White and Black, 1990 (negative), 1992 (print) Gelatin silver print, mounted to board The Morgan Library & Museum, purchased on the Charina Endowment Fund, 2020.23. © The Irving Penn Foundation

The Morgan's school programs are **free** to all public schools:

<https://www.themorgan.org/education/programs>

Concerts, Lectures, Films, tours, and more...

<http://www.themorgan.org/programs>

### The Morgan Book Project:

Every year, teachers and students work together to write, build, illustrate, and guild a book.

**The results are illuminating.**

<http://www.themorgan.org/education/morgan-book-project>



The Morgan Library & Museum

225 Madison Avenue

New York, NY 10016-3405

**ESU  
USA**

**APPLY NOW FOR SUMMER 2024!**

TRAVEL AND  
LEARN ABROAD

**For Teachers and Lifelong  
Learners**



**SHAKESPEARE'S  
GLOBE IN LONDON**

JUNE 24 - JULY 12, 2024

*Teaching Shakespeare Through  
Performance*

**SHAKESPEARE'S BIRTHPLACE  
TRUST IN STRATFORD**

JULY 14-20, 2024

*Explore Shakespeare on the  
1-week Page to Stage  
Program*



**OXFORD & EDINBURGH  
UNIVERSITY**

JUNE 30 - AUGUST 17, 2024

*1-6 week programs offered in  
English Literature, Creative Writing,  
Theater, History & Politics*

**Learn more and apply online at:  
<https://www.esuus.org/what-we-do/teachers-learning-abroad/>**

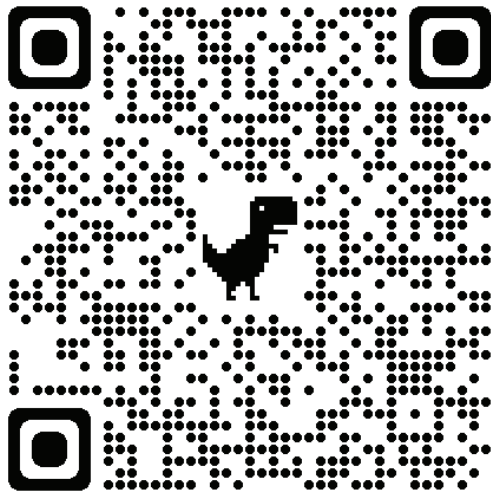
**ESU  
USA**  
100  
YEARS

**PALLADIO &  
SHAKESPEARE  
IN THE VENETO**

The English-Speaking Union National Patron Tour  
**September 21-27, 2024**

Please contact Rossana Ivanova for more information: [rivanova@esuus.org](mailto:rivanova@esuus.org)

## Donate to the ESU National Shakespeare Competition!



Very rarely do I get such an amazing opportunity to act alongside so many people that all share a love for Shakespeare..... I'm excited to give it my all at nationals. I'm always searching for ways to improve, so as long as I walk out with something new learned, I will be over the moon.

*Jackson Davis  
Charlottesville Branch*



We have been humans experiencing emotions forever...Shakespeare is a bridge between past and present in that way. Cherish it. Uplift it. Help others understand that. That's good theatre.

*Kat Pascual,  
Washington, DC Branch*

## ESU Board and Staff

### Officers

Dr. E. Quinn Peeper, Chairman  
Darryl McCormick,  
Vice Chairman  
Noel Sloan, Treasurer  
Karen Karpowich,  
President &  
Executive Director

### Members of the Board of Directors

Donald Best, Los Angeles, CA  
Dr. Gregory Buck,  
Corpus Christi, TX  
Susan Ferris, Portland, OR  
Bruce Haefner, Denver, CO  
Barbara Hughes,  
Winter Park, FL  
Dr. Mary Lee, Washington, DC  
Frederick London, Carlsbad, CA  
Stacy Loizos, Esq., Stamford, CT  
Michelle Seale, Houston, TX  
Jonathan Sichel, Purchase, NY  
Barbara Stark, Palm Beach, FL  
Bruce Thompson, Gibsonia, PA  
Beatrice von der Schulenburg,  
Nassau New Providence,  
The Bahamas  
Mary Coleman Way,  
Paradise Valley, AZ

### Staff

Zech Azazi, Receptionist  
Grace Darling,  
Marketing Communications  
Coordinator  
Tony DiFilippo, Controller  
Karl Hart, Senior Manager,  
Student Services  
Erika Hudson, Designer  
Matthew Hudson,  
Manager, Volunteer Services  
Rossana Ivanova,  
Development Director  
Karen Karpowich,  
Executive Director  
Maryellen Liotta, Manager of  
Shakespeare Programs  
Stephan Lubrun,  
Manager Facilities/IT  
Jenny Nguyen,  
National Bookkeeper  
DeAndre Short, Membership  
Services Coordinator  
Alice Uhl, Director, International  
Scholarships, Shakespeare &  
Debate Programs  
Deborah Unger,  
Executive Assistant  
Rona Weitz, Immigrant  
Programs Director  
Noel Williamson,  
Facilities/Porter

# Upcoming Events

## ESU ARNIC 10th Anniversary & 2024 Graduation

A House of Immigrants: Celebrating 10 Years of Impact and Immigrant Success

ESU National Headquarters, NYC  
June 20, 2024, 5:30 - 7:30 pm

Celebrate the tenth anniversary of our center for new immigrants, the Andrew Romay New Immigrant Center (ARNIC). This program empowers recent immigrants in the greater NYC area by equipping them with the skills and resources they need to build successful lives in the U.S. You can learn more about the center at [esu-arnic.org](https://www.esu-arnic.org).

Join us for a special evening where we will showcase the impact of our center on the 2,500 new immigrants from 90+ countries who have benefitted from our programs over the past decade. We will also recognize the accomplishments of our graduating class of 2024. Student speakers and alumni from the past ten years will share their immigration stories and talk about the positive impact of our immigrant center on their lives. Help celebrate our vision of creating a welcoming and inclusive space where new immigrants from around the world can study together and build new lives in the U.S.

## ESU 2024 Shakespeare Birthplace Trust: Page-to-Stage Program

Stratford-upon Avon  
July 14 - 20, 2024

Join ESU travelers for a week of Shakespeare discoveries and insights while staying at the charming and historic White Swan Hotel in the heart of Stratford. Enjoy talks from eminent scholars and behind-the-scenes tours of archives not open to the public. Highlights include performances at the world-renowned Royal Shakespeare Company, pre-performance talks and post-performance discussions with RSC actors. For more information go to: <https://www.esuus.org/what-we-do/teachers-learning-abroad/page-to-stage/> or contact Alice Uhl at [auhl@esuus.org](mailto:auhl@esuus.org).

## ESU 2024 Patron Trip: A Private View of Italy

The ESU Tour "Palladio and Shakespeare in the Veneto, Italy"  
September 21-27, 2024

The ESU will travel to Verona and Vicenza, Lake Garda, Asolo, Padua, and Mantua, exploring historic churches and charming plazas, libraries and lush gardens, palazzos and Palladian villas. Thanks to our Italian host art historian Count Stefano Aluffi-Pentini's trusted friendships with the families that own some of the residences designed by Andrea Palladio, our small group will enjoy private access to some of Veneto's hidden treasures and meet a couple of these owners, who will graciously share their stories and family legacies. For more information contact Rossana Ivanova at [rivanova@esuus.org](mailto:rivanova@esuus.org).  
<https://www.esuus.org/event/esu-2024-patron-trip-a-private-view-of-italy/>

## Save the Date: ESU Annual General Meeting and International Council Meeting

Cleveland, Ohio  
October 18-20, 2024

Join us in welcoming our friends representing English-Speaking Unions from across the globe as they convene with us in Cleveland for the annual ESU International Council Meeting. Get ready to embark on an exhilarating journey as we gather in the vibrant city of Cleveland. We are thrilled to extend a warm invitation to all ESU members to join us for an unforgettable experience this October.

Immerse yourself in the captivating atmosphere of Cleveland, a city renowned for its rich history, cultural diversity, and thriving arts scene. This is your chance to connect with like-minded individuals who share your passion for education, language, and cultural exchange. Prepare to be inspired by engaging speakers, workshops, and enlightening discussions.







## **The English-Speaking Union National Shakespeare Competition**

is a performance-based education program in which high school students nationwide read, analyze, and perform Shakespeare's works. Students develop communication skills and an appreciation of the power of language and literature. Since 1983 more than 325,000 students have brought the timeless works of Shakespeare to life and expressed his words with understanding, feeling and clarity. The National Shakespeare Competition has been recognized by the Globe Center, the Children's Theatre Foundation of America and the American Academy of Achievement.

**The English-Speaking Union** celebrates English as a shared language to foster global understanding and good will by providing educational and cultural programs for students, teachers, immigrants and members.

**TLab** offers teachers and lifelong learners educational enrichment programs in the United Kingdom at Oxford, the University of Edinburgh and Shakespeare's Globe in London.

**Middle School Debate** builds research, critical thinking and public speaking skills through debate.

**English in Action** pairs English language learners with trained volunteers to improve their fluency through weekly conversations.

**Andrew Romay New Immigrant Center (ARNIC)** is a free program that facilitates the full integration of recent immigrants by providing English classes, professional development, cultural learning and civic engagement.

**Luard Morse Scholarship** sends students from Historically Black Colleges and Universities to study for a semester at a British university of their choosing.

**Secondary School Exchange** sends American and British high school graduates to secondary schools for a gap year abroad.

**#ESUNSC24 Connect with us!**



@ESUUSA



@ESU\_US



@ESU\_US



EnglishSpeakingUnion



EnglishInAction

For more information on programs and membership, please visit: [www.esuus.org](http://www.esuus.org)  
The English-Speaking Union | 144 East 39th St | New York, NY 10016 | Tel: 212-818-1200  
Cover Art by Tug Rice